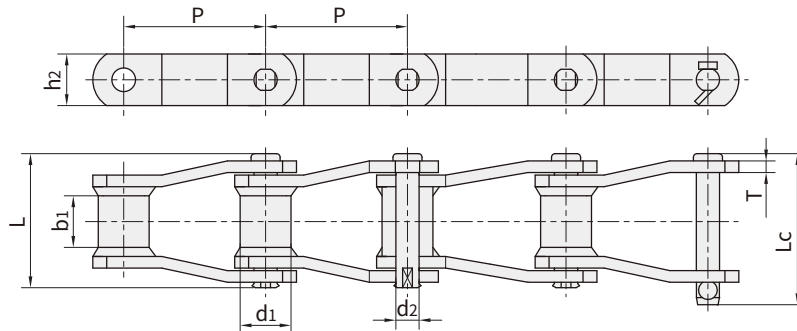


焊接弯板链 Welded type cranked link chain

焊接弯板链 Welded type cranked link chain



链号 Bison	节距 Pitch	套筒直径 Bush diameter	内节内宽 Width between inner plates	销轴直径 Pin diameter	销轴长度 Pin length		链板高度 Plate depth	链板厚度 Plate thickness	极限拉伸载荷 Ultimate tensile strength	平均拉伸载荷 Average tensile strength	每米长重 Weight per meter
Bison Chain No.	P	d1 max	b1 min	d2 max	L max	Lc max	h2 max	T max	Q min	Q0	q
	mm	mm	mm	mm	mm	mm	mm	mm	kN/lbf	kN	kg/m
WR78 WH78	66.27	22.90	28.40	12.78	73.00	79.3	28.4	6.4	93.4/21227 106.8/24273	102.70 117.50	6.20
WR82 WH82	78.10	31.50	31.80	14.35	80.00	86.0	31.8	6.4	100.1/22750 131.2/29818	110.10 144.30	7.98
WR106 WH106	152.40	37.10	41.20	19.13	103.00	111.0	38.1	9.7	169.0/38409 224.6/51045	185.90 247.00	10.56
WR110 WH110	152.40	32.00	46.70	19.13	107.70	115.5	38.1	9.7	169.0/38409 224.6/51045	185.90 247.00	10.40
WR111 WH111	120.90	37.10	57.20	19.13	116.80	124.5	38.1	9.7	169.0/38409 224.6/51045	185.90 247.00	12.72
WR124 WH124	101.60	37.10	41.20	19.13	103.00	110.0	38.1	9.7	169.0/38409 224.6/51045	185.90 247.00	12.38
WR124H WH124H	103.20	41.70	41.20	22.30	131.60	133.0	50.8	12.7	275.8/62682 355.9/80886	303.30 391.40	19.68
WR132 WH132	153.67	44.70	76.20	25.48	151.00	162.2	50.8	12.7	275.8/62682 378.1/85932	303.30 415.90	20.00
WR150 WH150	153.67	44.45	73.00	25.40	151.00	162.2	63.5	12.7	620.0/140907	682.00	20.50
WR155 WH155	153.67	44.45	73.00	28.57	164.00	176.0	63.5	12.7	820.0/186361	902.00	20.70
WR157 WH157	153.67	44.45	76.20	28.57	164.00	176.0	63.5	15.9	820.0/186361	902.00	20.80

■注：W R 仅销轴和套筒热处理
W H 所有零件热处理

■Note: Note: WR - Welded steel chain - only pins & bushes heat treated
WH - Welded steel chain - all heat treated