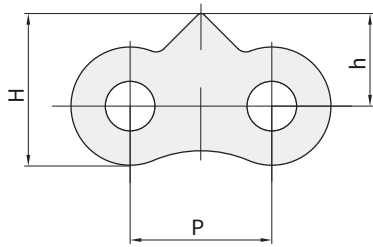


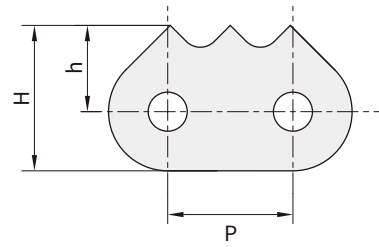
## 尖齿链 Sharp top chain

尖齿链 Sharp top chain



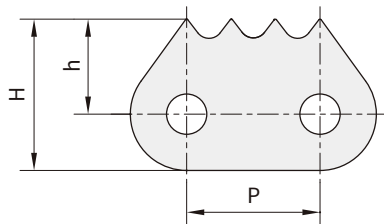
链号 Bison	P	h	H
Bison Chain No.	mm	mm	mm
12AF1	19.05	14.15	21.95
16AF1	25.40	16.60	26.85

尖齿链 Sharp top chain



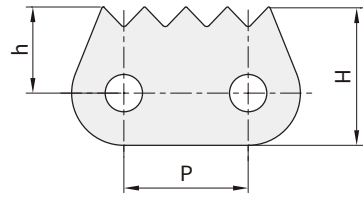
链号 Bison	P	h	H
Bison Chain No.	mm	mm	mm
C16A-3PEP	25.4	17.4	

尖齿链 Sharp top chain



链号 Bison	P	h	H
Bison Chain No.	mm	mm	mm
C16A-1170	25.40	16.5	28.0
16B-1170	25.40	16.0	26.5
16B-1172	25.40	15.0	25.5

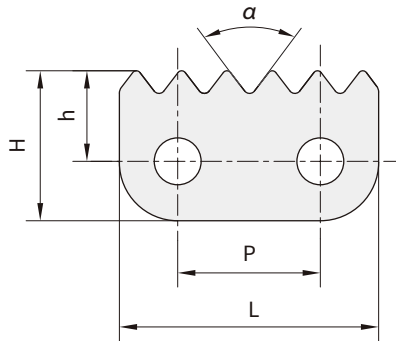
尖齿链 Sharp top chain



链号 Bison	P	h	H
Bison Chain No.	mm	mm	mm
12BF1	19.05	13.2	21.2

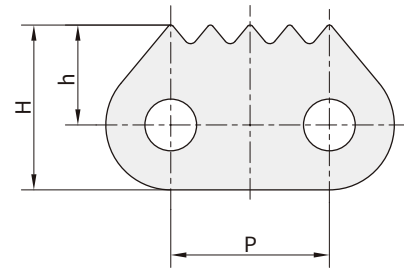
## 尖齿链 Sharp top chain

尖齿链 Sharp top chain



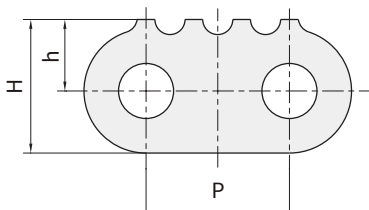
链号 Biosn	P	L		H	α
Biosn Chain No.	mm	mm	mm	mm	mm
16B-1185	25.40	46.0	16.0	26.5	75°

尖齿链 Sharp top chain



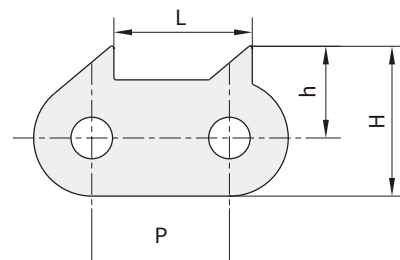
链号 Biosn	P	h	H
Biosn Chain No.	mm	mm	mm
C16A-5PEP	25.40	17.40	29.00
C16A-5PEPF1	25.40	17.30	29.50
C24B-1831	38.10	22.50	39.00

尖齿链 Sharp top chain



链号 Biosn	P	h	H
Biosn Chain No.	mm	mm	mm
24B-1810	38.1	19	35.5
24A-1802	38.1	21	38.5

尖齿链 Sharp top chain



链号 Biosn				L
Biosn Chain No	mm	mm	mm	mm
C16B-1160	25.40	10.50	27.50	25.40
C16B-1161	25.40	17.00	27.50	25.40
C16A-1160	25.40	18.00	29.50	25.40