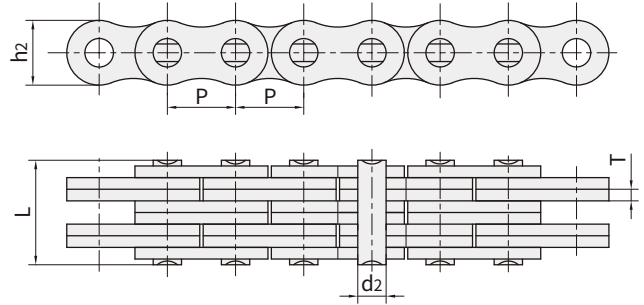
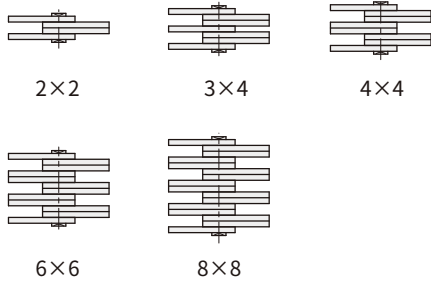


板式链 Leaf chain

板式链 Leaf chain

链板组合
Plate lacing

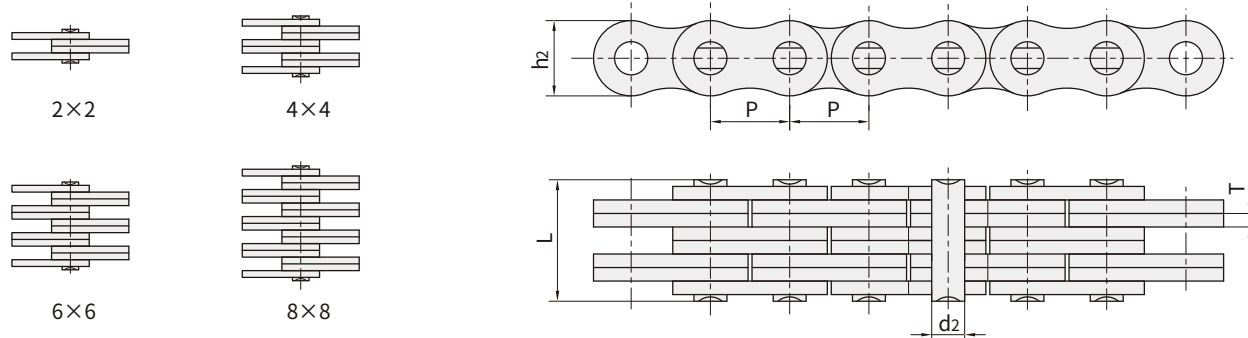


链号 ANSI/ISO	节距 Pitch	链板组合 Plate lacing	链板高度 Plate depth	链板厚度 Plate thickness	销轴直径 Pin diameter	销轴长度 Pin length	极限拉伸载荷 Ultimate tensile strength	平均拉伸载荷 Average tensile strength	每米长重 Weight per meter
ANSI/ISO Chain No.	P		h ₂ max	T max	d ₂ max	L max	Q min	Q ₀	q
	mm		mm	mm	mm	mm	kN/lbf	kN	kg/m
AL322	9.525	2×2	7.7	1.30	3.58	6.80	9.0/2045	10.2	0.23
AL344		4×4				11.60	18.0/4090	20.0	0.46
AL422	12.700	2×2	10.4	1.50	3.96	8.30	14.7/3304	15.4	0.39
AL444		4×4				14.40	29.4/6609	30.8	0.74
AL466		6×6				20.50	44.0/9891	46.2	1.13
AL522	15.875	2×2	12.8	2.03	5.08	11.05	24.5/5508	25.2	0.64
AL534		3×4				17.00	36.8/8273	37.8	1.10
AL544		4×4				19.40	48.9/10993	50.5	1.25
AL566		6×6				27.50	73.4/16500	74.2	1.79
AL622	19.050	2×2	15.6	2.42	5.94	13.00	33.4/7508	37.5	0.86
AL644		4×4				22.70	66.7/14994	75.0	1.76
AL666		6×6				32.20	100.1/22502	112.5	2.60
AL688		8×8				42.20	133.4/29988	142.0	3.49
AL822	25.400	2×2	20.8	3.25	7.92	16.20	57.9/13016	65.0	1.54
AL844		4×4				29.40	115.7/26009	130.0	3.00
AL866		6×6				44.20	173.5/39003	195.0	4.46
AL888		8×8				55.50	231.4/52019	245.0	6.30
AL1022	31.750	2×2	25.6	4.00	9.53	19.60	84.5/18996	98.0	2.37
AL1044		4×4				36.40	169.0/37991	196.0	4.68
AL1066		6×6				52.30	253.5/56987	294.0	7.20
AL1088		8×8				68.50	338.0/75982	371.0	9.94
AL1222	38.100	2×2	30.5	4.80	11.10	24.30	120.1/26998	136.0	3.65
AL1244		4×4				43.80	240.2/53997	272.0	7.05
AL1266		6×6				63.20	360.3/80995	394.0	10.50
AL1288		8×8				82.60	480.4/107994	512.0	14.03
AL1444	44.450	4×4	36.4	5.60	12.64	51.30	302.5/68002	356.0	10.34
AL1466		6×6				74.50	453.7/101992	534.0	15.16
AL1644	50.800	4×4	41.6	6.40	14.21	58.00	382.5/85986	449.6	12.98
AL1666		6×6				83.80	573.8/128990	674.4	19.76
AL1688		8×8				109.50	765.0/171972	899.2	25.47

板式链 Leaf chain

板式链 Leaf chain

链板组合
Plate lacing

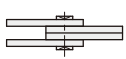


链号 DIN/ISO	节距 Pitch	链板组合 Plate lacing	链板高度 Plate depth	链板厚度 Plate thickness	销轴直径 Pin diameter	销轴长度 Pin length	极限拉伸载荷 Ultimate tensile strength	平均拉伸载荷 Average tensile strength	每米长重 Weight per meter
DIN/ISO Chain No.	P mm		h ₂ max mm	T max mm	d ₂ max mm	L max mm	Q min kN/lbf	Q ₀ kN	q kg/m
LL0822	12.700	2×2	10.6	1.6	4.45	8.9	18.2/4094	20.4	0.42
LL0844		4×4				15.6	36.4/8188	40.7	0.84
LL0866		6×6				22.0	54.6/12283	60.0	1.24
LL0888		8×8				28.5	72.8/16378	80.0	1.64
LL1022	15.875	2×2	13.7	1.6	5.08	9.2	22.7/5107	25.5	0.54
LL1044		4×4				15.8	45.4/10213	51.0	1.06
LL1066		6×6				22.1	68.1/15321	76.3	1.57
LL1088		8×8				28.8	90.8/20427	101.9	2.10
LL1222	19.050	2×2	16.0	1.85	5.72	10.4	29.5/6637	33.2	0.73
LL1244		4×4				17.9	59.0/13273	66.4	1.44
LL1266		6×6				25.4	88.5/19910	99.7	2.15
LL1288		8×8				32.9	118.0/26547	132.9	2.84

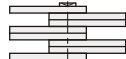
板式链 Leaf chain

板式链 Leaf chain

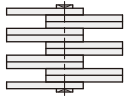
链板组合
Plate lacing



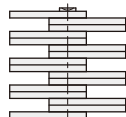
2×2



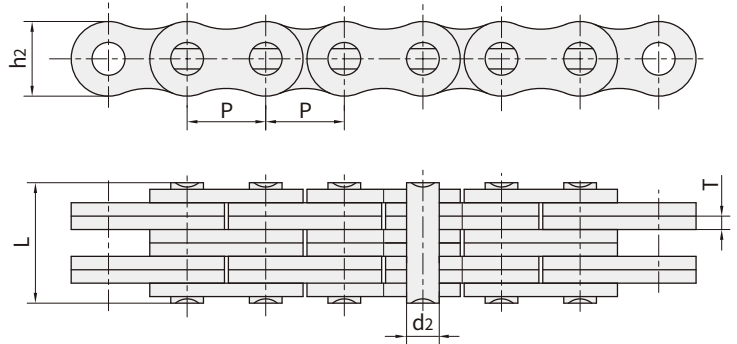
4×4



6×6



8×8

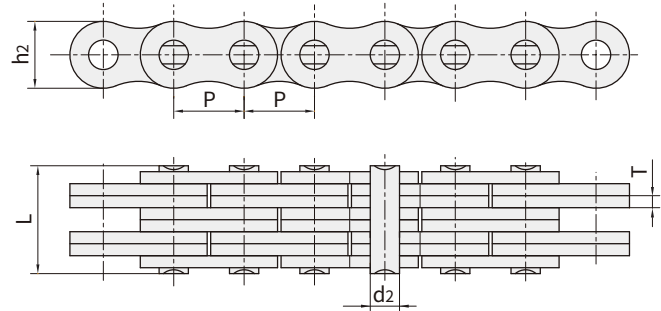
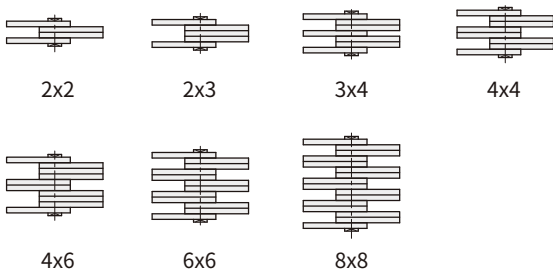


链号 DIN/ISO	节距 Pitch	链板组合 Plate lacing	链板高度 Plate depth	链板厚度 Plate thickness	销轴直径 Pin diameter	销轴长度 Pin length	极限拉伸载荷 Ultimate tensile strength	平均拉伸载荷 Average tensile strength	每米长重 Weight per meter
DIN/ISO Chain No.	P		h ₂ max	T max	d ₂ max	L max	Q min	Q ₀	q
	mm		mm	mm	mm	mm	kN/lbf	kN	kg/m
LL1622	25.40	2×2	21.00	3.1	8.28	17.2	58.0/13182	66.7	1.52
LL1644		4×4				29.6	116.0/26363	140.0	2.90
LL1666		6×6				42.4	174.0/39545	208.8	4.30
LL1688		8×8				54.9	232.0/52726	278.0	5.71
LL2022	31.75	2×2	26.40	3.5	10.19	20.1	95.0/21591	109.2	2.33
LL2044		4×4				33.8	190.0/43182	218.5	4.40
LL2066		6×6				50.1	285.0/64773	324.6	6.79
LL2088		8×8				64.0	380.0/86363	435.1	8.90
LL2422	38.10	2×2	33.40	5.0	14.63	28.4	170.0/38363	195.5	4.47
LL2444		4×4				46.3	340.0/77273	380.8	8.22
LL2466		6×6				66.4	510.0/115909	571.2	12.22
LL2488		8×8				86.6	680.0/154545	775.2	16.30
LL2822	44.45	2×2	37.08	6.0	15.90	32.2	200.0/45455	224.0	5.10
LL2844		4×4				56.4	400.0/90909	448.0	9.90
LL2866		6×6				80.8	600.0/136363	672.0	14.60
LL2888		8×8				105.2	800.0/181818	896.0	19.40
LL3222	50.80	2×2	42.00	6.4	17.81	34.8	260.0/59091	291.2	6.20
LL3244		4×4				60.6	520.0/118182	582.4	12.30
LL3266		6×6				86.4	780.0/177272	873.6	18.30
LL3288		8×8				112.2	1040.0/233970	1176.0	24.00
LL4022	63.50	2×2	52.76	8.0	22.89	42.2	360.0/81818	403.2	10.30
LL4044		4×4				74.4	780.0/177273	873.6	20.00
LL4066		6×6				106.5	1080.0/245454	1209.6	30.00
LL4088		8×8				140.0	1440.0/323959	1747.2	39.10
LL4822	76.20	2×2	63.88	10.0	29.24	54.6	560.0/127272	627.2	18.50
LL4844		4×4				92.6	1120.0/254545	1554.4	35.70
LL4866		6×6				133.4	1680.0/377953	1880.0	53.00
LL4888		8×8				174.2	2240.0/509091	2508.8	70.40

板式链 Leaf chain

板式链 Leaf chain

链板组合
Plate lacing

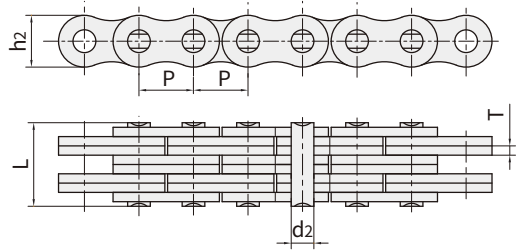
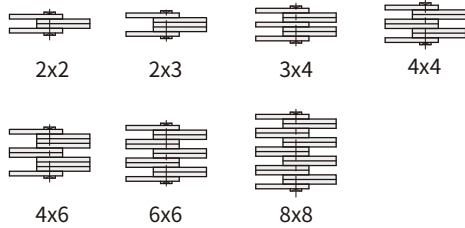


链号 ISO	链号 ANSI	节距 Pitch	链板组合 Plate lacing	链板高度 Plate depth	链板厚度 Plate thickness	销轴直径 Pin diameter	销轴长度 Pin length	极限拉伸载荷 Ultimate tensile strength	平均拉伸载荷 Average tensile strength	每米长重 Weight per meter
ISO Chain No.	ANSI Chain No.	P mm		h ₂ max mm	T max mm	d ₂ max mm	L max mm	Q min kN/lbf	Q ₀ kN	q kg/m
LH0822	BL422	12.700	2×2	12.07	2.08	5.09	11.05	22.2/5045	27.6	0.64
LH0823	BL423		2×3				13.16	22.2/5045	27.6	0.80
LH0834	BL434		3×4				17.40	33.4/7591	41.4	1.12
LH0844	BL444		4×4				19.51	44.5/10114	56.0	1.28
LH0846	BL446		4×6				23.75	44.5/10114	56.0	1.60
LH0866	BL466		6×6				27.99	66.7/15159	81.7	1.92
LH0888	BL488		8×8				36.45	89.0/20227	109.4	2.56
LH1022	BL522	15.875	2×2	15.09	2.44	5.96	12.90	33.4/7591	43.1	0.88
LH1023	BL523		2×3				15.37	33.4/7591	43.1	1.10
LH1034	BL534		3×4				20.32	48.9/11114	65.6	1.50
LH1044	BL544		4×4				22.78	66.7/15159	84.5	1.80
LH1046	BL546		4×6				27.74	66.7/15159	84.5	2.20
LH1066	BL566		6×6				32.69	100.1/22750	125.1	2.65
LH1088	BL588		8×8				42.57	133.4/30318	169.5	3.50
LH1222	BL622	19.050	2×2	18.11	3.30	7.94	17.37	48.9/11114	63.6	1.45
LH1223	BL623		2×3				20.73	48.9/11114	63.6	1.80
LH1234	BL634		3×4				27.43	75.6/17181	102.8	2.50
LH1244	BL644		4×4				30.78	97.9/22250	120.9	2.90
LH1246	BL646		4×6				37.49	97.9/22250	120.9	3.60
LH1266	BL666		6×6				44.20	146.8/33364	190.8	4.30
LH1288	BL688		8×8				57.61	195.7/44477	238.8	5.80
LH1622	BL822	25.400	2×2	24.13	4.09	9.54	21.34	84.5/19204	108.2	2.20
LH1623	BL823		2×3				25.48	84.5/19204	108.2	2.70
LH1634	BL834		3×4				33.76	129.0/29318	170.0	3.80
LH1644	BL844		4×4				37.90	169.0/38409	214.6	4.30
LH1646	BL846		4×6				46.18	169.0/38409	214.6	5.40
LH1666	BL866		6×6				54.46	253.6/57636	324.5	6.50
LH1688	BL888		8×8				71.02	338.1/76841	432.7	8.60

板式链 Leaf chain

板式链 Leaf chain

链板组合
Plate lacing



链号 ISO	链号 ANSI	节距 Pitch	链板组合 Plate lacing	链板高度 Plate depth	链板厚度 Plate thickness	销轴直径 Pin diameter	销轴长度 Pin length	极限拉伸载荷 Ultimate tensile strength	平均拉伸载荷 Average tensile strength	每米长重 Weight per meter
ISO Chain No.	ANSI Chain No.	P		h ₂ max	T max	d ₂ max	L max	Q min	Q ₀	q
		mm		mm	mm	mm	mm	mm	kN/lbf	kN
LH2022	BL1022	31.75	2×2	30.18	4.90	11.11	25.37	115.6/26272	150.8	3.40
LH2023	BL1023		2×3				30.33	115.6/26272	150.8	4.30
LH2034	BL1034		3×4				40.23	182.4/41454	231.6	6.00
LH2044	BL1044		4×4				45.19	231.3/52568	291.4	6.90
LH2046	BL1046		4×6				55.09	231.3/52568	291.4	8.60
LH2066	BL1066		6×6				65.00	347.0/78863	430.3	10.30
LH2088	BL1088		8×8				84.81	462.6/105136	555.1	13.80
LH2422	BL1222	38.10	2×2	36.20	5.77	12.71	29.62	151.2/34363	192.0	4.6
LH2423	BL1223		2×3				35.43	151.2/34363	192.0	5.8
LH2434	BL1234		3×4				47.07	244.6/55591	315.9	8.1
LH2444	BL1244		4×4				52.88	302.5/68750	381.1	9.3
LH2446	BL1246		4×6				64.52	302.5/68750	381.1	11.6
LH2466	BL1266		6×6				76.15	453.7/103113	543.6	13.9
LH2488	BL1288		8×8				99.42	605.0/137500	726.0	18.6
LH2822	BL1422	44.45	2×2	42.24	6.55	14.29	33.55	191.3/43477	225.7	6.1
LH2823	BL1423		2×3				40.16	191.3/43477	225.7	7.6
LH2834	BL1434		3×4				53.37	315.8/71772	372.6	10.6
LH2844	BL1444		4×4				59.97	382.6/86954	451.2	12.2
LH2846	BL1446		4×6				73.18	382.6/86954	451.2	15.2
LH2866	BL1466		6×6				86.39	578.3/131431	682.4	18.2
LH2888	BL1488		8×8				112.80	765.1/173886	902.8	24.3
LH3222	BL1622	50.80	2×2	48.26	7.52	17.46	39.01	289.1/65704	341.1	8.0
LH3223	BL1623		2×3				46.58	289.1/65704	341.1	10.0
LH3234	BL1634		3×4				61.72	440.4/100091	519.6	14.0
LH3244	BL1644		4×4				69.29	573.8/131431	680.4	16.0
LH3246	BL1646		4×6				84.43	578.3/131431	680.4	20.0
LH3266	BL1666		6×6				99.57	857.4/194863	1000.7	24.0
LH3288	BL1688		8×8				129.84	1156.5/262841	1364.6	32.0
LH4022	BL2022	63.50	2×2	60.33	9.91	23.81	51.74	433.7/98568	511.7	15.8
LH4023	BL2023		2×3				61.70	433.7/98568	511.7	19.8
LH4034	BL2034		3×4				81.61	649.4/147590	766.2	27.7
LH4044	BL2044		4×4				91.57	867.4/197163	1023.5	31.6
LH4046	BL2046		4×6				111.48	867.4/197163	1023.5	39.5
LH4066	BL2066		6×6				131.39	1301.1/295704	1535.2	47.4
LH4088	BL2088		8×8				171.22	1734.8/394272	2046.5	63.2